




GST NO.: 29AHZPU5620Q1ZZ

An ISO 9001:2015 Certified Company

ROYAL INDUSTRIAL SUPPLIERS

QUALITY FASTENERS SPECIALIST



 8310165941 / 9959457863

 sales@royalfastenersindia.com

 www.royalfastenersindia.com

TECHNICAL DATA SHEET

FLANGE NUT



MATERIAL- STAINLESS STEEL

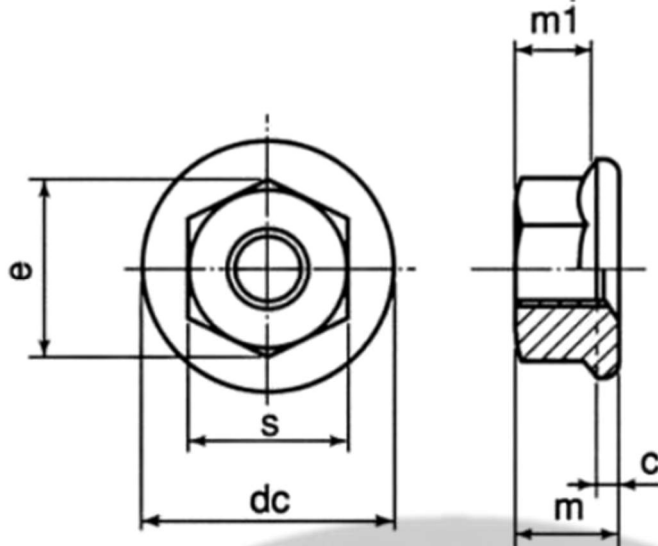
GRADE-SS304 (A2)

AS PER- DIN-6923

CATALOGUE NO. R4D15F

INSTALLATION GUIDE

- SELECT THE CORRECT SIZE OF FLANGE NUT TO MATCH THE BOLT OR STUD THREAD SIZE AND PITCH.
- ENSURE THAT BOTH THE NUT AND BOLT THREADS ARE CLEAN, DRY, AND FREE FROM OIL, GREASE, OR DEBRIS.
- ALIGN THE FLANGE NUT PROPERLY WITH THE BOLT OR STUD THREADS BEFORE STARTING INSTALLATION.
- HAND-TIGHTEN THE NUT CLOCKWISE UNTIL IT MAKES CONTACT WITH THE MATING SURFACE.
- USE A SUITABLE SPANNER OR SOCKET WRENCH THAT FITS THE HEX PORTION OF THE NUT SECURELY.
- CONTINUE TIGHTENING GRADUALLY, ENSURING THE FLANGE BASE IS EVENLY SEATED AGAINST THE MATING SURFACE.
- APPLY THE RECOMMENDED TORQUE USING A TORQUE WRENCH AS PER APPLICATION REQUIREMENTS.
- AVOID OVERTIGHTENING TO PREVENT THREAD DAMAGE OR DEFORMATION OF THE FLANGE SURFACE.
- ENSURE THE FLANGE TEETH (IF SERRATED) ARE PROPERLY ENGAGED TO PROVIDE ANTI-VIBRATION LOCKING ACTION.
- VERIFY THAT THE LOAD IS EVENLY DISTRIBUTED ACROSS THE FLANGE BASE FOR A SECURE CONNECTION.
- ENSURE AT LEAST TWO FULL THREADS OF THE BOLT PROTRUDE BEYOND THE NUT FOR OPTIMUM HOLDING STRENGTH.
- INSPECT THE FINAL ASSEMBLY TO CONFIRM A STRONG, STABLE, AND VIBRATION-RESISTANT CONNECTION.



Note: Flange may be plain or serrated

Quote the PART NUMBER given below with your order/ inquiries:

All Dimensions in mm

| Nominal Size d | PART NO. | Width Across Flat | | Across Corners | Flange Dia | Thickness |
|-----------------|-------------|-------------------|-------|----------------|------------|-----------|
| Thread Size ↓ | | s Max | s Min | e Min | dc Max | m Max |
| M3x0.5 | R4D15F03000 | 5.50 | 5.32 | 6.01 | 8.00 | 3.70 |
| M4x0.7 | R4D15F04000 | 7.00 | 6.78 | 7.66 | 10.00 | 4.65 |
| M5x0.8 | R4D15F05000 | 8.00 | 7.78 | 8.79 | 11.80 | 5.00 |
| M6x1.0 | R4D15F06000 | 10.00 | 9.78 | 11.05 | 14.20 | 6.00 |
| M8x1.25 | R4D15F08000 | 13.00 | 12.73 | 14.38 | 17.90 | 8.00 |
| M10x1.5 | R4D15F10000 | 15.00 | 14.73 | 16.64 | 21.80 | 10.00 |
| M12x1.75 | R4D15F12000 | 18.00 | 17.73 | 20.03 | 26.00 | 12.00 |
| M14x2.0 | R4D15F14000 | 21.00 | 20.67 | 23.36 | 29.90 | 15.30 |
| M16x2.0 | R4D15F16000 | 24.00 | 23.67 | 26.75 | 34.50 | 15.30 |
| M20x2.5 | R4D15F20000 | 30.00 | 29.67 | 32.95 | 42.80 | 15.30 |

Sizes in BLUE are non-preferred. Availability is limited and MOQ is applied

Data is strictly informative

Note: All Austenitic Stainless-Steel Fasteners may exhibit some Magnetic Properties due to the Manufacturing Process.

Refer: ISO 3506-2 Annex F