



GST NO.: 29AHZPU5620Q1ZZ

An ISO 9001:2015 Certified Company

ROYAL INDUSTRIAL SUPPLIERS

QUALITY FASTENERS SPECIALIST



8310165941 / 9959457863



sales@royalfastenersindia.com



www.royalfastenersindia.com

TECHNICAL DATA SHEET

CAGE NUT



MATERIAL- STAINLESS STEEL

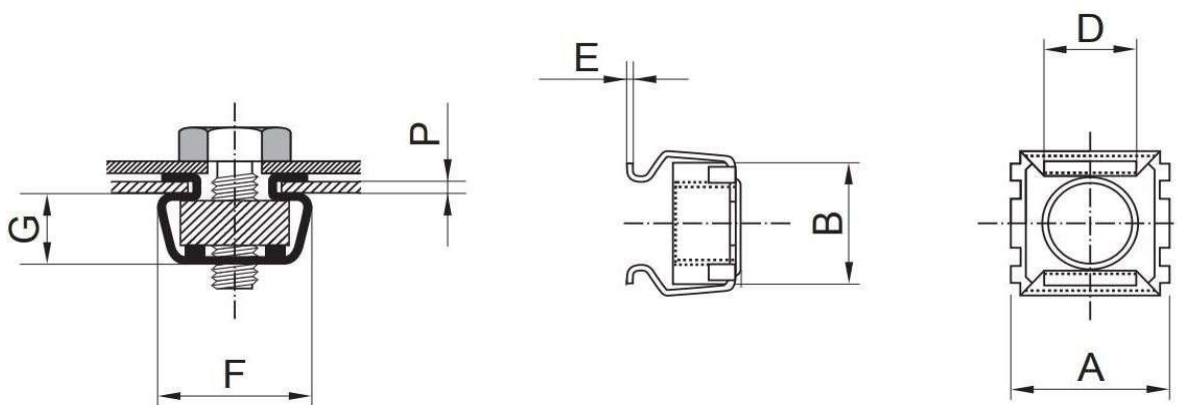
GRADE-SS304 (A2)

AS PER-NON-STANDARD

CATALOGUE NO. R4G16

INSTALLATION GUIDE

- SELECT THE CORRECT SIZE OF CAGE NUT TO MATCH THE BOLT OR SCREW SIZE AND PANEL THICKNESS.
- ENSURE THAT THE MOUNTING HOLE OR SQUARE SLOT IS CLEAN, FREE FROM BURRS, AND OF THE CORRECT DIMENSION.
- HOLD THE CAGE NUT ASSEMBLY SO THAT THE SPRING STEEL CLIPS ARE ALIGNED WITH THE PANEL HOLE.
- COMPRESS ONE SIDE OF THE CAGE CLIP INTO THE HOLE FIRST USING FINGERS OR PLIERS.
- PRESS THE OPPOSITE SIDE OF THE CLIP UNTIL THE CAGE NUT SNAPS SECURELY INTO PLACE INSIDE THE PANEL.
- VERIFY THAT THE NUT IS PROPERLY CENTERED AND CAN MOVE SLIGHTLY WITHIN THE CAGE FOR ALIGNMENT.
- ALIGN THE COMPONENT OR BRACKET TO BE MOUNTED OVER THE HOLE CONTAINING THE CAGE NUT.
- INSERT THE BOLT OR SCREW THROUGH THE COMPONENT AND INTO THE CAGE NUT THREAD.
- HAND-TIGHTEN THE BOLT CLOCKWISE TO START THREAD ENGAGEMENT.
- USE A SUITABLE SPANNER OR SCREWDRIVER TO TIGHTEN THE BOLT FIRMLY TO THE REQUIRED TORQUE.
- ENSURE THE COMPONENT IS FIRMLY SECURED AND THAT THE CAGE NUT REMAINS PROPERLY SEATED.
- TO REMOVE, SQUEEZE THE SPRING CLIPS INWARD AND PUSH THE CAGE NUT OUT FROM THE PANEL.
- INSPECT THE FINAL ASSEMBLY TO CONFIRM A STABLE, SECURE, AND WELL-ALIGNED CONNECTION.



Quote the PART NUMBER given below with your order/ inquiries:

All Dimensions in mm

| Dia | Part Number | G | A | B | E | Sheet thickness P |
|-----------|-------------|-----|------|------|-----|-------------------|
| M4 x 0.7 | R4G1604000 | 5.0 | 11.5 | 11.0 | 0.4 | 0.8 - 2.80 |
| M5 x 0.8 | R4G1605000 | 6.0 | 12.8 | 12.0 | 0.5 | 0.8 - 2.8 |
| M6 x 1.0 | R4G1606000 | 6.0 | 13.8 | 13.0 | 0.5 | 0.8 - 2.8 |
| M8 x 1.25 | R4G1608000 | 7.8 | 16.5 | 16.0 | 0.5 | 1.0 - 3.5 |
| M10 x 1.5 | R4G1610000 | 7.8 | 16.5 | 16.0 | 0.6 | 1.0 - 3.5 |

Sizes in BLUE are non-preferred. Availability is limited and MOQ is applied

Data is strictly informative

Note: All Austenitic Stainless-Steel Fasteners may exhibit some Magnetic Properties due to the Manufacturing Process.
Refer: ISO 3506-2 Annex F