



GST NO.: 29AHZPU5620Q1ZZ

An ISO 9001:2015 Certified Company

# ROYAL INDUSTRIAL SUPPLIERS

QUALITY FASTENERS SPECIALIST



8310165941 / 9959457863



sales@royalfastenersindia.com



www.royalfastenersindia.com

## TECHNICAL DATA SHEET

### ALLEN FLANGE BUTTON HEAD CAP SCREW (BHCS)



MATERIAL- STAINLESS STEEL

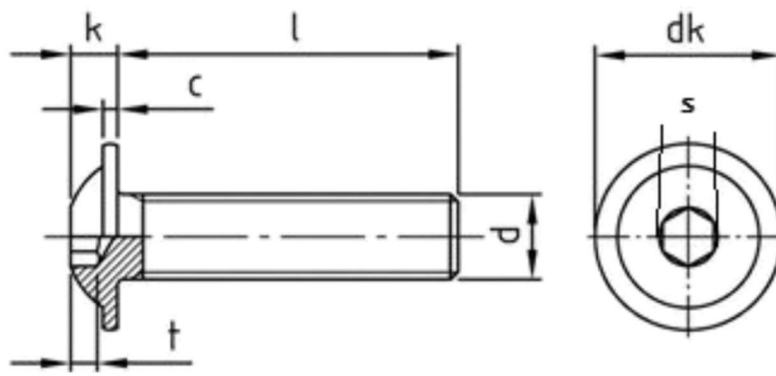
GRADE-SS304 (A2-70)

AS PER-ISO-7380-2

CATALOGUE NO. R4C22F

### INSTALLATION GUIDE

- VERIFY THE SCREW SIZE, LENGTH, THREAD TYPE, AND MATERIAL MATCH THE APPLICATION REQUIREMENT.
- ENSURE THE MATING HOLE OR THREAD IS CLEAN, DRY, AND FREE FROM OIL, DUST, OR DEBRIS.
- ALIGN THE COMPONENTS PROPERLY BEFORE INSERTING THE SCREW.
- INSERT THE ALLEN FLANGE BUTTON HEAD SCREW INTO THE HOLE AND START THREADING BY HAND TO AVOID CROSS-THREADING.
- USE THE CORRECT SIZE ALLEN KEY OR HEX DRIVER FOR FULL TOOL ENGAGEMENT.
- APPLY STEADY AND EVEN PRESSURE WHILE TIGHTENING TO PREVENT TOOL SLIP OR HEAD DAMAGE.
- ENSURE THE INTEGRATED FLANGE SITS FLAT AND EVENLY AGAINST THE MATING SURFACE.
- TIGHTEN THE SCREW TO THE SPECIFIED TORQUE USING A TORQUE WRENCH IF REQUIRED.
- AVOID OVERTIGHTENING TO PREVENT THREAD STRIPPING OR DEFORMATION OF THE FLANGE.
- VERIFY THAT THE FLANGE PROVIDES PROPER LOAD DISTRIBUTION WITHOUT THE NEED FOR A SEPARATE WASHER.
- CHECK THAT THE SCREW IS FULLY SEATED AND THE ASSEMBLY IS SECURE.
- INSPECT THE FINAL INSTALLATION TO CONFIRM A TIGHT, STABLE, AND CORROSION-RESISTANT CONNECTION.



Size	M2x0.4	M2.5x0.45	M3x0.5	M4x0.7	M5x0.8
Flange dk min	3.42	4.92	6.32	8.82	11.10
Flange dk max	4.00	5.50	6.90	9.40	11.80
k min	0.98	1.18	1.40	1.95	2.50
k max	1.23	1.43	1.65	2.20	2.75
Key Size s	1.30	1.50	2.00	2.50	3.00
t min	0.60	0.80	1.04	1.30	1.56
C max	0.50	0.60	0.70	0.80	1.00

Quote the PART NUMBER given below with your order/ inquiries:

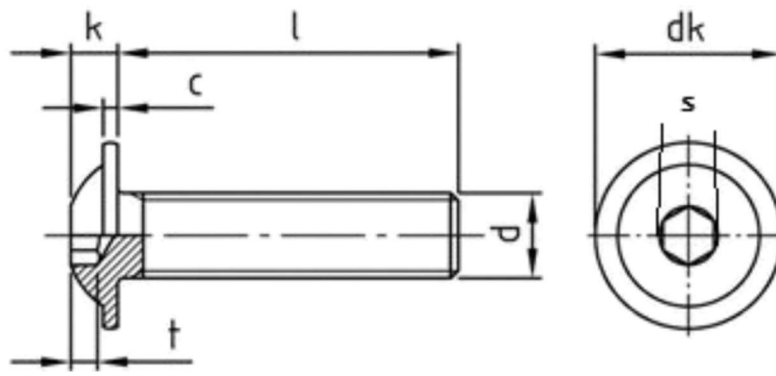
All Dimensions in mm

Length↓ Size→	M2x0.4	M2.5x0.45	M3x0.5	M4x0.7	M5x0.8
3	R4C22F02003	R4C22F20503	R4C22F03003		
4	R4C22F02004	R4C22F20504	R4C22F03004	R4C22F04004	
5	R4C22F02005	R4C22F20505	R4C22F03005	R4C22F04005	R4C22F05005
6	R4C22F02006	R4C22F20506	R4C22F03006	R4C22F04006	R4C22F05006
8	R4C22F02008	R4C22F20508	R4C22F03008	R4C22F04008	R4C22F05008
10	R4C22F02010	R4C22F20510	R4C22F03010	R4C22F04010	R4C22F05010
12	R4C22F02012	R4C22F20512	R4C22F03012	R4C22F04012	R4C22F05012
14	R4C22F02014	R4C22F20514	R4C22F03014	R4C22F04014	R4C22F05014
16	R4C22F02016	R4C22F20516	R4C22F03016	R4C22F04016	R4C22F05016
18	R4C22F02018	R4C22F20518	R4C22F03018	R4C22F04018	R4C22F05018
20	R4C22F02020	R4C22F20520	R4C22F03020	R4C22F04020	R4C22F05020
22			R4C22F03022	R4C22F04022	R4C22F05022
25			R4C22F03025	R4C22F04025	R4C22F05025
28			R4C22F03028	R4C22F04028	R4C22F05028
30			R4C22F03030	R4C22F04030	R4C22F05030
35			R4C22F03035	R4C22F04035	R4C22F05035
40			R4C22F03040	R4C22F04040	R4C22F05040
45			R4C22F03045	R4C22F04045	R4C22F05045
50			R4C22F03050	R4C22F04050	R4C22F05050
55				R4C22F04055	R4C22F05055
60				R4C22F04060	R4C22F05060
65					R4C22F05065
70					R4C22F05070
75					R4C22F05075
80					R4C22F05080

Sizes in BLUE are non-preferred. Availability is limited and MOQ is applied. *Data is strictly informative*

Note: All Austenitic Stainless-Steel Fasteners may exhibit some Magnetic Properties due to the Manufacturing Process.

Refer: ISO 3506-2 Annex F



Size	M6x1.0	M8x1.25	M10x1.5	M12x1.75
Flange dk min	12.90	17.10	21.06	25.16
Flange dk max	13.60	17.80	21.90	26.00
k min	3.00	4.10	5.20	6.24
k max	3.30	4.40	5.50	6.60
Key Size s	4.00	5.00	6.00	8.00
t min	2.08	2.60	3.12	4.16
C max	1.20	1.50	2.00	2.40

Quote the PART NUMBER given below with your order/ inquiries:

All Dimensions in mm

Length↓ Size→	M6x1.0	M8x1.25	M10x1.5	M12x1.75
6	R4C22F06006			
8	R4C22F06008	R4C22F08008		
10	R4C22F06010	R4C22F08010		
12	R4C22F06012	R4C22F08012	R4C22F10012	R4C22F12012
14	R4C22F06014	R4C22F08014	R4C22F10014	R4C22F12014
16	R4C22F06016	R4C22F08016	R4C22F10016	R4C22F12016
18	R4C22F06018	R4C22F08018	R4C22F10018	R4C22F12018
20	R4C22F06020	R4C22F08020	R4C22F10020	R4C22F12020
22	R4C22F06022	R4C22F08022	R4C22F10022	R4C22F12022
25	R4C22F06025	R4C22F08025	R4C22F10025	R4C22F12025
28	R4C22F06028	R4C22F08028	R4C22F10028	R4C22F12028
30	R4C22F06030	R4C22F08030	R4C22F10030	R4C22F12030
35	R4C22F06035	R4C22F08035	R4C22F10035	R4C22F12035
40	R4C22F06040	R4C22F08040	R4C22F10040	R4C22F12040
45	R4C22F06045	R4C22F08045	R4C22F10045	R4C22F12045
50	R4C22F06050	R4C22F08050	R4C22F10050	R4C22F12050
55	R4C22F06055	R4C22F08055	R4C22F10055	R4C22F12055
60	R4C22F06060	R4C22F08060	R4C22F10060	R4C22F12060
65	R4C22F06065	R4C22F08065	R4C22F10065	R4C22F12065
70	R4C22F06070	R4C22F08070	R4C22F10070	R4C22F12070
75	R4C22F06075	R4C22F08075	R4C22F10075	R4C22F12075
80	R4C22F06080	R4C22F08080	R4C22F10080	R4C22F12080
90	R4C22F06090	R4C22F08090	R4C22F10090	R4C22F12090
100	R4C22F05100	R4C22F08100	R4C22F10100	R4C22F12100
110	R4C22F05110	R4C22F08110	R4C22F10110	R4C22F12110
120	R4C22F05120	R4C22F08120	R4C22F10120	R4C22F12120

Sizes in BLUE are non-preferred. Availability is limited and MOQ is applied. *Data is strictly informative*

Note: All Austenitic Stainless-Steel Fasteners may exhibit some Magnetic Properties due to the Manufacturing Process.

Refer: ISO 3506-2 Annex F