



GST NO.: 29AHZPU5620Q1ZZ

An ISO 9001:2015 Certified Company

ROYAL INDUSTRIAL SUPPLIERS

QUALITY FASTENERS SPECIALIST



8310165941 / 9959457863



sales@royalfastenersindia.com



www.royalfastenersindia.com

TECHNICAL DATA SHEET

EYE BOLT



MATERIAL- STAINLESS STEEL

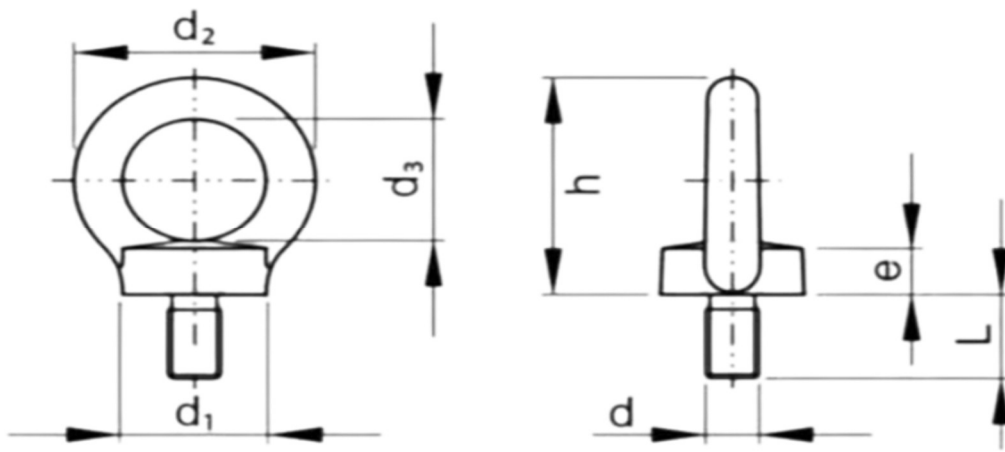
GRADE-SS316 (A4-70)

AS PER-DIN-580

CATALOGUE NO. R6G70

INSTALLATION GUIDE

- SELECT THE CORRECT SIZE AND TYPE OF EYE BOLT BASED ON LOAD REQUIREMENTS AND THREAD SIZE.
- ENSURE THE MOUNTING SURFACE OR MATERIAL IS CLEAN, FLAT, AND STRUCTURALLY STRONG ENOUGH TO HANDLE THE LOAD.
- VERIFY THAT THE THREADS OF THE EYE BOLT AND THE MATING HOLE ARE CLEAN AND FREE FROM RUST, DUST, OR DEBRIS.
- INSERT THE EYE BOLT INTO THE THREADED HOLE OR THROUGH-HOLE DEPENDING ON THE DESIGN.
- HAND-TIGHTEN THE EYE BOLT CLOCKWISE UNTIL IT CONTACTS THE MATING SURFACE.
- USE A SPANNER OR WRENCH ONLY ON THE SHANK FLATS (IF PROVIDED) AND NEVER ON THE EYE, TO AVOID DEFORMATION.
- IF USING A THROUGH-HOLE EYE BOLT, SECURE IT WITH A WASHER AND NUT ON THE OPPOSITE SIDE.
- APPLY THE RECOMMENDED TORQUE USING A TORQUE WRENCH ACCORDING TO LOAD AND SAFETY STANDARDS.
- ALIGN THE EYE PROPERLY IN THE DIRECTION OF THE LOAD TO PREVENT BENDING OR FAILURE.
- ENSURE THAT THE LOAD IS APPLIED IN LINE WITH THE PLANE OF THE EYE AND NEVER SIDEWAYS.
- CHECK THAT THE EYE BOLT IS FULLY SEATED, STRAIGHT, AND FREE FROM MOVEMENT.
- DO NOT EXCEED THE WORKING LOAD LIMIT SPECIFIED BY THE MANUFACTURER.
- INSPECT THE FINAL INSTALLATION TO CONFIRM A SAFE, STABLE, AND RELIABLE CONNECTION.



Note: Factor of safety is 6

Quote the PART NUMBER given below with your order/ inquiries:

All Dimensions in mm

Nominal Size (d)	PART NUMBER	Stem Length	Eye-ID	Height	Collar Dia	Collar Height	Eye-OD	WLL Kgs
Thread Size		L	d3	h	d1	e	d2	T
M6x1.0	R6G7006000	12	19.50	36.00	19.00	9.00	34.00	100.00
M8x1.25	R6G7008000	13	19.50	36.00	19.00	9.00	34.00	140.00
M10x1.5	R6G7010000	17	24.00	44.00	24.50	10.00	41.00	230.00
M12x1.75	R6G7012000	20	28.00	52.00	29.00	11.00	50.00	240.00
M14x2.0	R6G7014000	27	33.00	62.00	35.00	12.00	60.00	600.00
M16x2.0	R6G7016000	27	33.00	62.00	35.00	12.00	60.00	700.00
M18x2.5	R6G7018000	27	33.00	62.00	35.00	12.00	60.00	700.00
M20x2.5	R6G7020000	30	38.00	71.00	40.00	15.00	69.00	1200.00
M24x3.0	R6G7024000	36	48.00	90.00	50.00	19.00	86.00	1800.00
M30x3.5	R6G7030000	45	58.00	109.00	65.00	23.00	105.00	3600.00
M36x4.0	R6G7036000	54	72.00	126.00	70.00	28.00	120.00	3600.00

Sizes in BLUE are non-preferred. Availability is limited and MOQ is applied

Data is strictly informative

Note: All Austenitic Stainless-Steel Fasteners may exhibit some Magnetic Properties due to the Manufacturing Process.
Refer: ISO 3506-2 Annex F