



GST NO.: 29AHZPU5620Q1ZZ

An ISO 9001:2015 Certified Company

# ROYAL INDUSTRIAL SUPPLIERS

QUALITY FASTENERS SPECIALIST



8310165941 / 9959457863



sales@royalfastenersindia.com



www.royalfastenersindia.com

## TECHNICAL DATA SHEET

### EYE SCREW



MATERIAL- STAINLESS STEEL

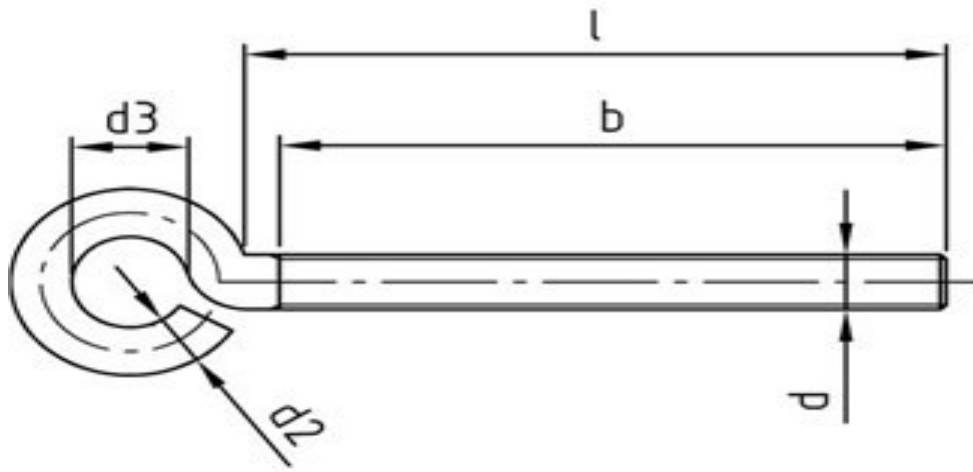
GRADE-SS316 (A4-70)

AS PER-NON-STANDARD

CATALOGUE NO. R6G70E

### INSTALLATION GUIDE

- VERIFY THE EYE SCREW SIZE, THREAD TYPE, AND LOAD RATING MATCH THE APPLICATION REQUIREMENT.
- INSPECT THE EYE SCREW FOR CRACKS, DEFORMATION, OR SURFACE DEFECTS BEFORE INSTALLATION.
- ENSURE THE MATING HOLE OR THREAD IS CLEAN, DRY, AND FREE FROM BURRS AND CONTAMINATION.
- SELECT A STRONG AND APPROVED BASE MATERIAL CAPABLE OF HANDLING THE EXPECTED LOAD.
- ALIGN THE EYE SCREW STRAIGHT WITH THE THREADED HOLE BEFORE INSERTION.
- INSERT THE EYE SCREW AND START THREADING BY HAND TO AVOID CROSS-THREADING.
- USE SUITABLE TOOLING ON THE SHANK (IF PROVIDED), NOT ON THE EYE LOOP ITSELF.
- TIGHTEN THE EYE SCREW TO THE SPECIFIED TORQUE USING APPROPRIATE TOOLS.
- ENSURE THE EYE IS POSITIONED IN THE CORRECT LOAD DIRECTION AFTER TIGHTENING.
- DO NOT APPLY SIDE LOAD UNLESS THE PRODUCT IS RATED FOR ANGULAR LOADING.
- AVOID OVERTIGHTENING TO PREVENT THREAD DAMAGE OR STRUCTURAL WEAKENING.
- CHECK THAT THE EYE SCREW IS FULLY SEATED AND SECURE IN THE MATERIAL.
- VERIFY THAT THE LOAD PATH IS STRAIGHT AND SAFE BEFORE USE.
- INSPECT THE FINAL INSTALLATION FOR STABILITY, ALIGNMENT, AND SAFE WORKING CONDITION.



Quote the PART NUMBER given below with your order/ inquiries:

All Dimensions in mm

Thread Size	Item Code	Thickness	Eye Diameter	Thread Length
d	PART NUMBER	d2	d3	b
M4x0.7x10	R6G70E04010	3.50	6.0	9
M4x0.7x20	R6G70E04020	3.50	6.0	18
M4x0.7x30	R6G70E04030	3.50	6.0	27
M4x0.7x40	R6G70E04040	3.50	6.0	37
M5x0.8x20	R6G70E05020	4.40	8.0	18
M5x0.8x30	R6G70E05030	4.40	8.0	27
M5x0.8x40	R6G70E05040	4.40	8.0	37
M5x0.8x50	R6G70E05050	4.40	8.0	47
M6x1.0x20	R6G70E06020	5.25	10.0	18
M6x1.0x30	R6G70E06030	5.25	10.0	27
M6x1.0x40	R6G70E06040	5.25	10.0	37
M6x1.0x50	R6G70E06050	5.25	10.0	47
M6x1.0x60	R6G70E06060	5.25	10.0	57
M8x1.25x30	R6G70E08030	7.05	10.0	27
M8x1.25x40	R6G70E08040	7.05	10.0	37
M8x1.25x50	R6G70E08050	7.05	10.0	47
M8x1.25x60	R6G70E08060	7.05	10.0	57
M8x1.25x70	R6G70E08070	7.05	10.0	65
M8x1.25x80	R6G70E08080	7.05	10.0	77
M10x1.5x70	R6G70E10070	8.85	15.0	65

Sizes in BLUE are non-preferred. Availability is limited and MOQ is applied *Data is strictly informative*

Note: All Austenitic Stainless-Steel Fasteners may exhibit some Magnetic Properties due to the Manufacturing Process.  
Refer: ISO 3506-2 Annex F