



GST NO.: 29AHZPU5620Q1ZZ

An ISO 9001:2015 Certified Company

ROYAL INDUSTRIAL SUPPLIERS

QUALITY FASTENERS SPECIALIST



8310165941 / 9959457863



sales@royalfastenersindia.com



www.royalfastenersindia.com

TECHNICAL DATA SHEET

LONG STEM EYE BOLT



MATERIAL- STAINLESS STEEL

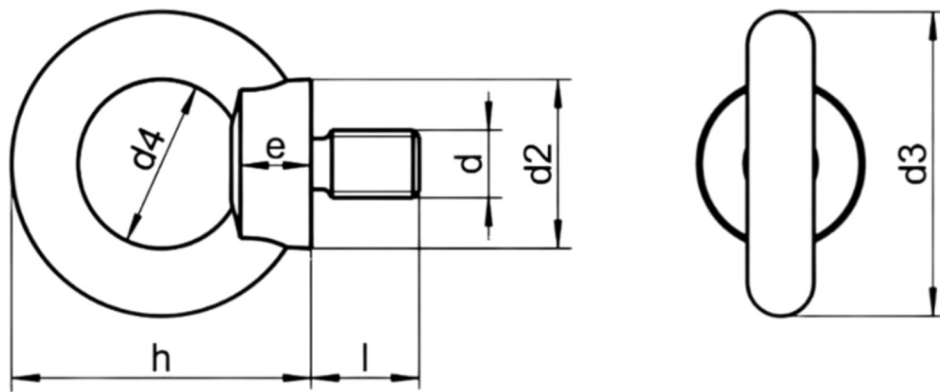
GRADE-SS304 (A2-70)

AS PER-DIN-580L

CATALOGUE NO. R4G70L

INSTALLATION GUIDE

- INSPECT THE LONG EYE BOLT FOR ANY DAMAGE, CRACKS, OR DEFORMITIES BEFORE INSTALLATION.
- VERIFY THAT THE EYE BOLT SIZE AND THREAD MATCH THE MATING COMPONENT OR STRUCTURE.
- ENSURE THE MATING HOLE IS CLEAN, FREE OF DEBRIS, AND PROPERLY THREADED.
- ALIGN THE LONG EYE BOLT WITH THE THREADED HOLE OR INSERTION POINT.
- HAND-TIGHTEN THE EYE BOLT TO START THREAD ENGAGEMENT AND AVOID CROSS-THREADING.
- USE A WRENCH OR SUITABLE TOOL TO TIGHTEN THE LONG EYE BOLT TO THE REQUIRED TORQUE SPECIFICATION.
- ENSURE THE EYE IS ORIENTED IN THE DIRECTION OF THE LOAD APPLICATION.
- DO NOT OVERTIGHTEN, AS IT MAY DAMAGE THREADS OR COMPROMISE LOAD CAPACITY.
- USE A WASHER OR LOCKING DEVICE IF SPECIFIED FOR THE APPLICATION.
- CHECK THE LONG EYE BOLT FOR PROPER SEATING AND FULL THREAD ENGAGEMENT.
- ENSURE THE LOAD IS APPLIED IN A STRAIGHT LINE AVOID SIDE LOADING OR ANGLED PULLS.
- PERFORM A FINAL INSPECTION TO CONFIRM STABILITY AND SECURE INSTALLATION.
- RECHECK THE BOLT AFTER INITIAL LOAD APPLICATION TO VERIFY IT REMAINS TIGHT.



Nominal Size(d)	Thread Size→	M8x1.25	M10x1.5	M12x1.75	M14x2.0	M16x2.0	M20x2.5
Eye-ID	d4	19.50	24.00	28.00	33.00	33.00	38.00
height	h	36.00	44.00	52.00	62.00	62.00	71.00
collar dia	d2	19.00	24.50	29.00	35.00	35.00	40.00
collar ht	e	9.00	10.00	11.00	12.00	12.00	15.00
Eye-OD	d3	34.00	42.00	52.00	61.00	61.00	70.00
WLL Kgs	T	140.00	230.00	240.00	600.00	700.00	1200.00

Quote the PART NUMBER given below with your order/ inquiries:

All Dimensions in mm

Length ↓ Size→	M8x1.25	M10x1.5	M12x1.75	(M14x2.0)	M16x2.0	M20x2.5
25	R4G70L08025	R4G70L10025	R4G70L12025			
30	R4G70L08030	R4G70L10030	R4G70L12030	R4G70L14030	R4G70L16030	
40	R4G70L08040	R4G70L10040	R4G70L12040	R4G70L14040	R4G70L16040	R4G70L20040
50	R4G70L08050	R4G70L10050	R4G70L12050	R4G70L14050	R4G70L16050	R4G70L20050
60	R4G70L08060	R4G70L10060	R4G70L12060	R4G70L14060	R4G70L16060	R4G70L20060
75	R4G70L08075	R4G70L10075	R4G70L12075	R4G70L14075	R4G70L16075	R4G70L20075
90	R4G70L08090	R4G70L10090	R4G70L12090	R4G70L14090	R4G70L16090	R4G70L20090
100	R4G70L08100	R4G70L10100	R4G70L12100	R4G70L14100	R4G70L16100	R4G70L20100
110	R4G70L08110	R4G70L10110	R4G70L12110	R4G70L14110	R4G70L16110	R4G70L20110
125		R4G70L10125	R4G70L12125	R4G70L14125	R4G70L16125	R4G70L20125
140		R4G70L10140	R4G70L12140	R4G70L14140	R4G70L16140	R4G70L20140
150		R4G70L10150	R4G70L12150	R4G70L14150	R4G70L16150	R4G70L20150

Sizes in BLUE are non-preferred. Availability is limited and MOQ is applied

Data is strictly informative

Note: All Austenitic Stainless-Steel Fasteners may exhibit some Magnetic Properties due to the Manufacturing Process.

Refer: ISO 3506-2 Annex F