



GST NO.: 29AHZPU5620Q1ZZ

An ISO 9001:2015 Certified Company

# ROYAL INDUSTRIAL SUPPLIERS

QUALITY FASTENERS SPECIALIST



8310165941 / 9959457863



sales@royalfastenersindia.com



www.royalfastenersindia.com

## TECHNICAL DATA SHEET

### LONG STEM EYE BOLT



MATERIAL- STAINLESS STEEL

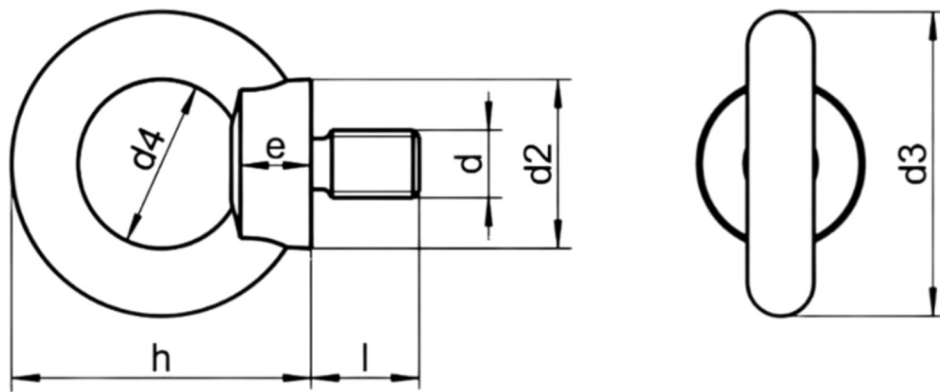
GRADE-SS316 (A4-70)

AS PER-DIN-580L

CATALOGUE NO. R6G70L

### INSTALLATION GUIDE

- INSPECT THE LONG EYE BOLT FOR ANY DAMAGE, CRACKS, OR DEFORMITIES BEFORE INSTALLATION.
- VERIFY THAT THE EYE BOLT SIZE AND THREAD MATCH THE MATING COMPONENT OR STRUCTURE.
- ENSURE THE MATING HOLE IS CLEAN, FREE OF DEBRIS, AND PROPERLY THREADED.
- ALIGN THE LONG EYE BOLT WITH THE THREADED HOLE OR INSERTION POINT.
- HAND-TIGHTEN THE EYE BOLT TO START THREAD ENGAGEMENT AND AVOID CROSS-THREADING.
- USE A WRENCH OR SUITABLE TOOL TO TIGHTEN THE LONG EYE BOLT TO THE REQUIRED TORQUE SPECIFICATION.
- ENSURE THE EYE IS ORIENTED IN THE DIRECTION OF THE LOAD APPLICATION.
- DO NOT OVERTIGHTEN, AS IT MAY DAMAGE THREADS OR COMPROMISE LOAD CAPACITY.
- USE A WASHER OR LOCKING DEVICE IF SPECIFIED FOR THE APPLICATION.
- CHECK THE LONG EYE BOLT FOR PROPER SEATING AND FULL THREAD ENGAGEMENT.
- ENSURE THE LOAD IS APPLIED IN A STRAIGHT LINE AVOID SIDE LOADING OR ANGLED PULLS.
- PERFORM A FINAL INSPECTION TO CONFIRM STABILITY AND SECURE INSTALLATION.
- RECHECK THE BOLT AFTER INITIAL LOAD APPLICATION TO VERIFY IT REMAINS TIGHT.



Nominal Size(d)	Thread Size→	M8x1.25	M10x1.5	M12x1.75	M14x2.0	M16x2.0	M20x2.5
Eye-ID	d4	19.50	24.00	28.00	33.00	33.00	38.00
height	h	36.00	44.00	52.00	62.00	62.00	71.00
collar dia	d2	19.00	24.50	29.00	35.00	35.00	40.00
collar ht	e	9.00	10.00	11.00	12.00	12.00	15.00
Eye-OD	d3	34.00	42.00	52.00	61.00	61.00	70.00
WLL Kgs	T	140.00	230.00	240.00	600.00	700.00	1200.00

Quote the PART NUMBER given below with your order/ inquiries:

All Dimensions in mm

Length ↓ Size→	M8x1.25	M10x1.5	M12x1.75	(M14x2.0)	M16x2.0	M20x2.5
25	R6G70L08025	R6G70L10025	R6G70L12025			
30	R6G70L08030	R6G70L10030	R6G70L12030	R6G70L14030	R6G70L16030	
40	R6G70L08040	R6G70L10040	R6G70L12040	R6G70L14040	R6G70L16040	R6G70L20040
50	R6G70L08050	R6G70L10050	R6G70L12050	R6G70L14050	R6G70L16050	R6G70L20050
60	R6G70L08060	R6G70L10060	R6G70L12060	R6G70L14060	R6G70L16060	R6G70L20060
75	R6G70L08075	R6G70L10075	R6G70L12075	R6G70L14075	R6G70L16075	R6G70L20075
90	R6G70L08090	R6G70L10090	R6G70L12090	R6G70L14090	R6G70L16090	R6G70L20090
100	R6G70L08100	R6G70L10100	R6G70L12100	R6G70L14100	R6G70L16100	R6G70L20100
110	R6G70L08110	R6G70L10110	R6G70L12110	R6G70L14110	R6G70L16110	R6G70L20110
125		R6G70L10125	R6G70L12125	R6G70L14125	R6G70L16125	R6G70L20125
140		R6G70L10140	R6G70L12140	R6G70L14140	R6G70L16140	R6G70L20140
150		R6G70L10150	R6G70L12150	R6G70L14150	R6G70L16150	R6G70L20150

Sizes in BLUE are non-preferred. Availability is limited and MOQ is applied

Data is strictly informative

Note: All Austenitic Stainless-Steel Fasteners may exhibit some Magnetic Properties due to the Manufacturing Process.

Refer: ISO 3506-2 Annex F