



GST NO.: 29AHZPU5620Q1ZZ

An ISO 9001:2015 Certified Company

ROYAL INDUSTRIAL SUPPLIERS

QUALITY FASTENERS SPECIALIST



8310165941 / 9959457863



sales@royalfastenersindia.com



www.royalfastenersindia.com

TECHNICAL DATA SHEET

CAST EYE BOLT



MATERIAL- STAINLESS STEEL

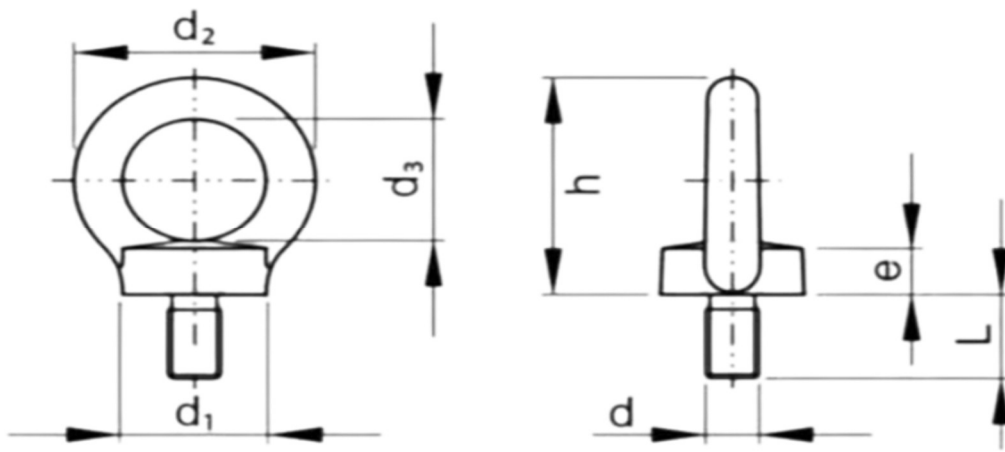
GRADE-SS316 (A4-70)

AS PER-DIN-580

CATALOGUE NO. R6G70C

INSTALLATION GUIDE

- SELECT THE CORRECT SIZE AND TYPE OF EYE BOLT BASED ON LOAD REQUIREMENTS AND THREAD SIZE.
- ENSURE THE MOUNTING SURFACE OR MATERIAL IS CLEAN, FLAT, AND STRUCTURALLY STRONG ENOUGH TO HANDLE THE LOAD.
- VERIFY THAT THE THREADS OF THE EYE BOLT AND THE MATING HOLE ARE CLEAN AND FREE FROM RUST, DUST, OR DEBRIS.
- INSERT THE EYE BOLT INTO THE THREADED HOLE OR THROUGH-HOLE DEPENDING ON THE DESIGN.
- HAND-TIGHTEN THE EYE BOLT CLOCKWISE UNTIL IT CONTACTS THE MATING SURFACE.
- USE A SPANNER OR WRENCH ONLY ON THE SHANK FLATS (IF PROVIDED) AND NEVER ON THE EYE, TO AVOID DEFORMATION.
- IF USING A THROUGH-HOLE EYE BOLT, SECURE IT WITH A WASHER AND NUT ON THE OPPOSITE SIDE.
- APPLY THE RECOMMENDED TORQUE USING A TORQUE WRENCH ACCORDING TO LOAD AND SAFETY STANDARDS.
- ALIGN THE EYE PROPERLY IN THE DIRECTION OF THE LOAD TO PREVENT BENDING OR FAILURE.
- ENSURE THAT THE LOAD IS APPLIED IN LINE WITH THE PLANE OF THE EYE AND NEVER SIDEWAYS.
- CHECK THAT THE EYE BOLT IS FULLY SEATED, STRAIGHT, AND FREE FROM MOVEMENT.
- DO NOT EXCEED THE WORKING LOAD LIMIT SPECIFIED BY THE MANUFACTURER.
- INSPECT THE FINAL INSTALLATION TO CONFIRM A SAFE, STABLE, AND RELIABLE CONNECTION.



Note: Factor of safety is 6

Quote the PART NUMBER given below with your order/ inquiries:

All Dimensions in mm

Nominal Size(d)	PART NUMBER	Stem Length	Eye-ID	height	collar dia	collar ht	Eye-OD	WLL Kgs
Thread Size		L	d3	h	d1	e	d2	T
M3x0.5	R6G70C03000	6.5	11.0	18.5	12.0	4.8	17.0	20
M4x0.7	R6G70C04000	8.5	13.0	22.0	12.5	5.0	21.0	30
M5x0.8	R6G70C05000	11	12.5	23.0	12.5	5.5	23.0	45
M6x1.0	R6G70C06000	11	16.0	28.5	16.0	6.0	28.5	60
M8x1.25	R6G70C08000	13	20.0	35.0	20.0	6.0	36.0	100
M10x1.5	R6G70C10000	17	25.0	45.0	25.0	8.0	45.0	180
M12x1.75	R6G70C12000	20	30.0	53.0	30.0	10.0	54.0	240
M16x2.0	R6G70C16000	27	35.0	62.0	35.0	12.0	63.0	500
M20x2.5	R6G70C20000	30	40.0	71.0	40.0	14.0	72.0	800
M24x3.0	R6G70C24000	36	50.0	90.0	50.0	18.0	90.0	1200
M27x3.0	R6G70C27000	45	60.0	109.0	65.0	22.0	108.0	1800
M30x3.5	R6G70C30000	45	60.0	109.0	65.0	22.0	108.0	2400
M36x4.0	R6G70C36000	54	70.0	128.0	75.0	26.0	126.0	2800

Sizes in BLUE are non-preferred. Availability is limited and MOQ is applied

Data is strictly informative

Note: All Austenitic Stainless-Steel Fasteners may exhibit some Magnetic Properties due to the Manufacturing Process.
Refer: ISO 3506-2 Annex F