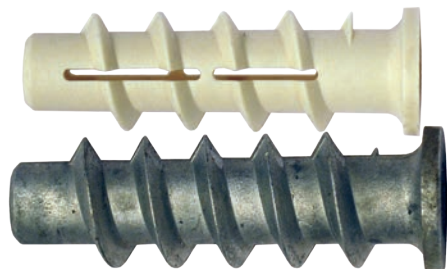


## Expandet LB

Expandet LB is suitable for fixings like cable trays, brackets, pipe clamps in porous materials like aerated concrete, breeze, light blocks, two and three layers of plasterboards.



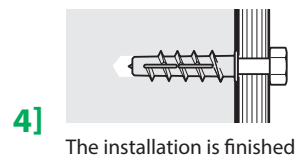
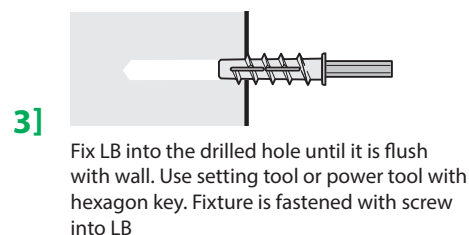
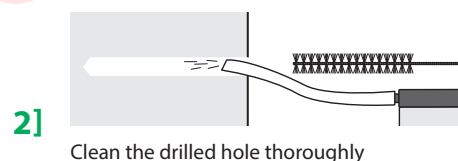
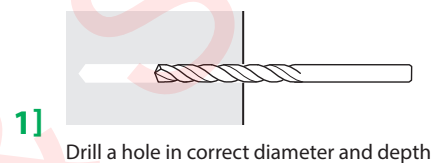
### ADVANTAGES

- Developed for fixing in porous materials.
- High tension loads.
- LB Nylon can be used with woodscrew or metric screw.

### ACCESSORIES

Setting tool.

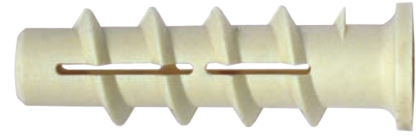
### INSTALLATION:



Type	Load capacities			
	Aerated concrete PP4		Aerated concrete PP2	
	$N_{Rd}$ Recommended tension load kN*	$V_{Rd}$ Recommended shear load kN*	$N_{Rd}$ Recommended tension load kN <sup>◇</sup>	$V_{Rd}$ Recommended shear load kN <sup>◇</sup>
LB4	0,43		0,21	
LB6	0,60	0,91	0,29	0,56
LB8	0,90	0,97	0,43	0,66
LB10	0,92	1,10	0,64	0,71

- Design resistance for LB Nylon is valid for a single anchor independent of load direction together with largest recommended screw in aerated concrete PP4 (535 kg/m<sup>3</sup>, 4 N/mm<sup>2</sup>) not influenced by edge distance and/or spacing..
- ◇ Design resistance for LB Nylon is valid for a single anchor independent of load direction together with largest recommended screw in aerated concrete PP2 (375 kg/m<sup>3</sup>, 2 N/mm<sup>2</sup>) not influenced by edge distance and/or spacing.

## Expandet LB Nylon



### EXPANDET LB NYLON (Technical Sheet No. 203)

TYPE DIMENSION MM	WOOD-SCREW MM	DRILL DIA. MM	HEXAGON KEY MM	EXPANDET ARTICLE NO.	PCS. PER BOX	Part No	EAN 13 PER BOX
10 x 50	4,0 - 4,5	10	10	661050/4	25	<a href="#">N4L1310050</a>	5708620066202
10 x 50	6,0	10	10	661050/6	25	<a href="#">N4L1310150</a>	5708620068091
12 x 60	8,0	12	12	661260	20	<a href="#">N4L1312060</a>	5708620068077
14 x 70	10,0	14	14	661270	10	<a href="#">N4L1314070</a>	5708620068084

## Expandet LB Metal



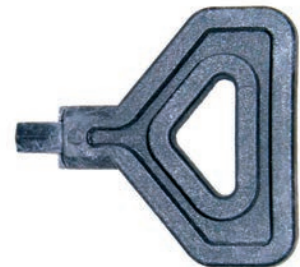
### EXPANDET LB METAL (Technical Sheet No. 203)

TYPE DIMENSION MM	MACHINE SCREW MM	DRILL DIA. MM	HEXAGON KEY MM	EXPANDET ARTICLE NO.	PCS. PER BOX	Part No	EAN 13 PER BOX
10 x 50	* 6,0	10	10	651050	25	<a href="#">N1L1310050</a>	5708620066141
12 x 60	* 8,0	12	12	651260	20	<a href="#">N1L1312060</a>	5708620066158
14 x 70	* 10,0	14	14	651470	10	<a href="#">N1L1314070</a>	5708620066165

\* Available on request

## Setting Tool for Expandet LB

Expandet setting tool with hexagon head is used for fixing Expandet LB.



### EXPANDET SETTING TOOL FOR FIXING EXPANDET LB

TYPE DIMENSION
For LB 10 mm
For LB 12 mm
For LB 14 mm

EXPANDET ARTICLE NO.	PCS. PER BOX	Part No	EAN 13 PER BOX
661000	1	<a href="#">N7L28661000</a>	5708620068145
661200	1	<a href="#">N7L38661200</a>	5708620068107
661400	1	<a href="#">N7L28661400</a>	5708620068114