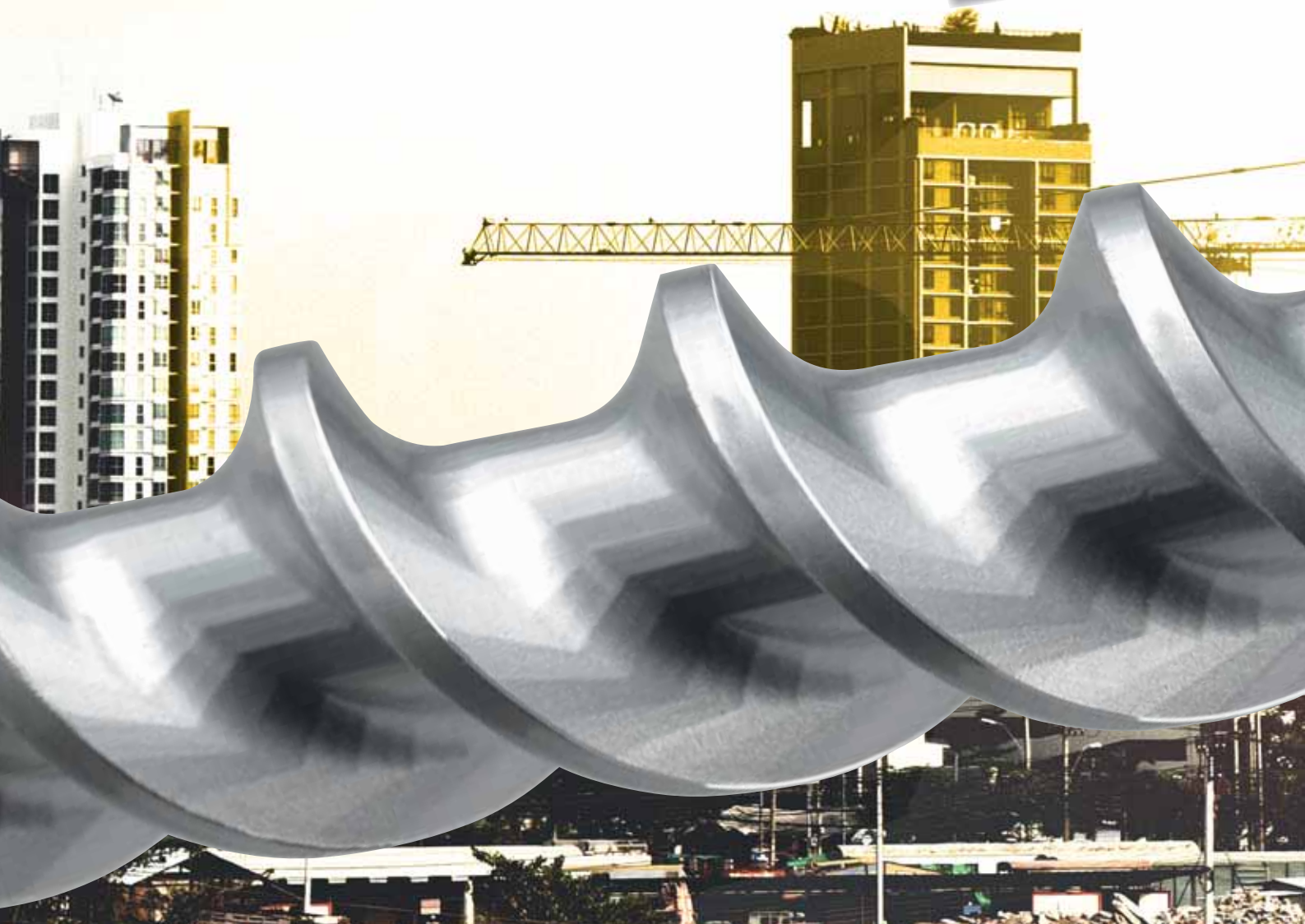


NEW SDS-MAX DRILL BIT

ULTIMAX 646

100% CARBIDE HEAD - 10 CUTTERS

new



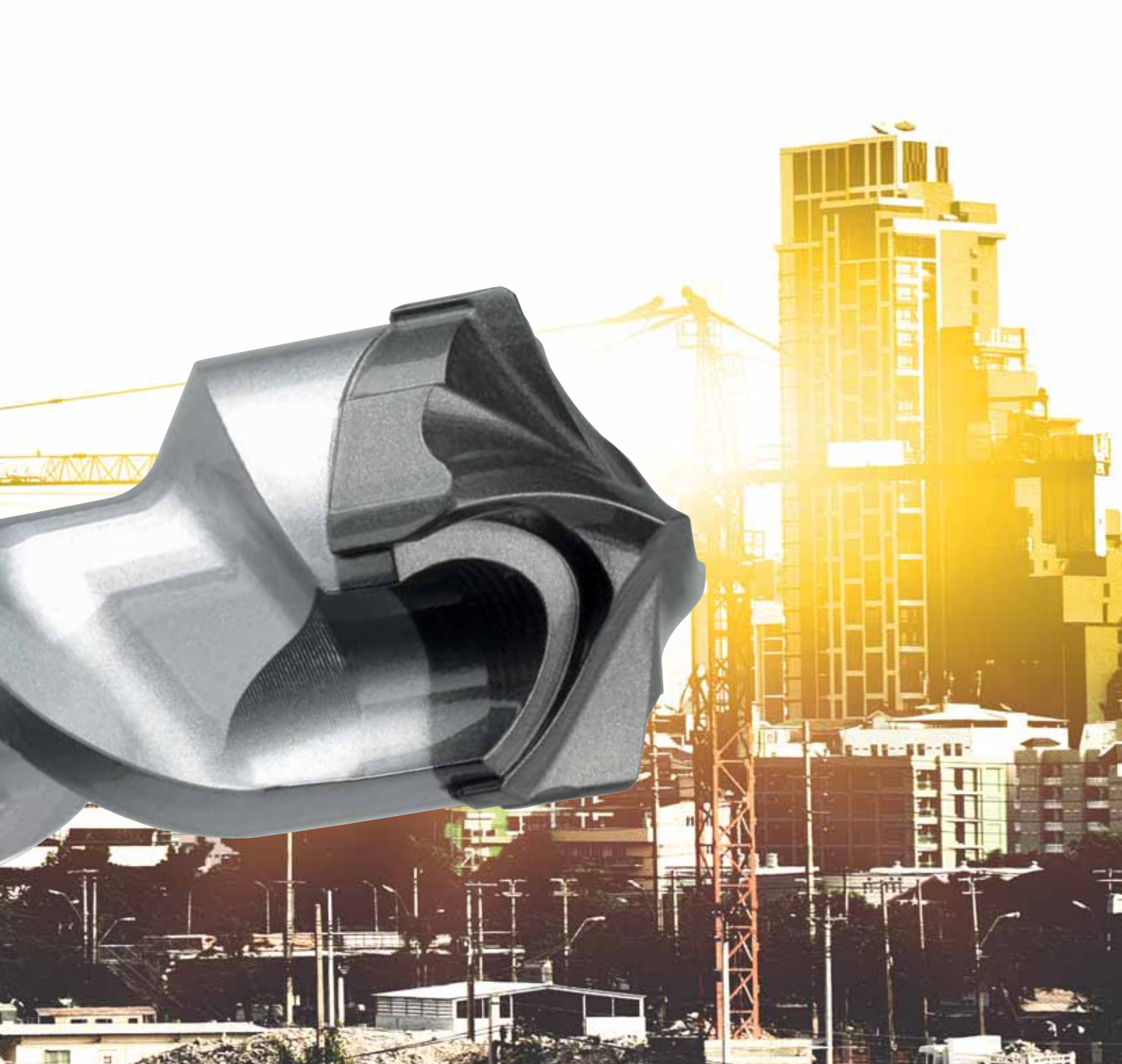
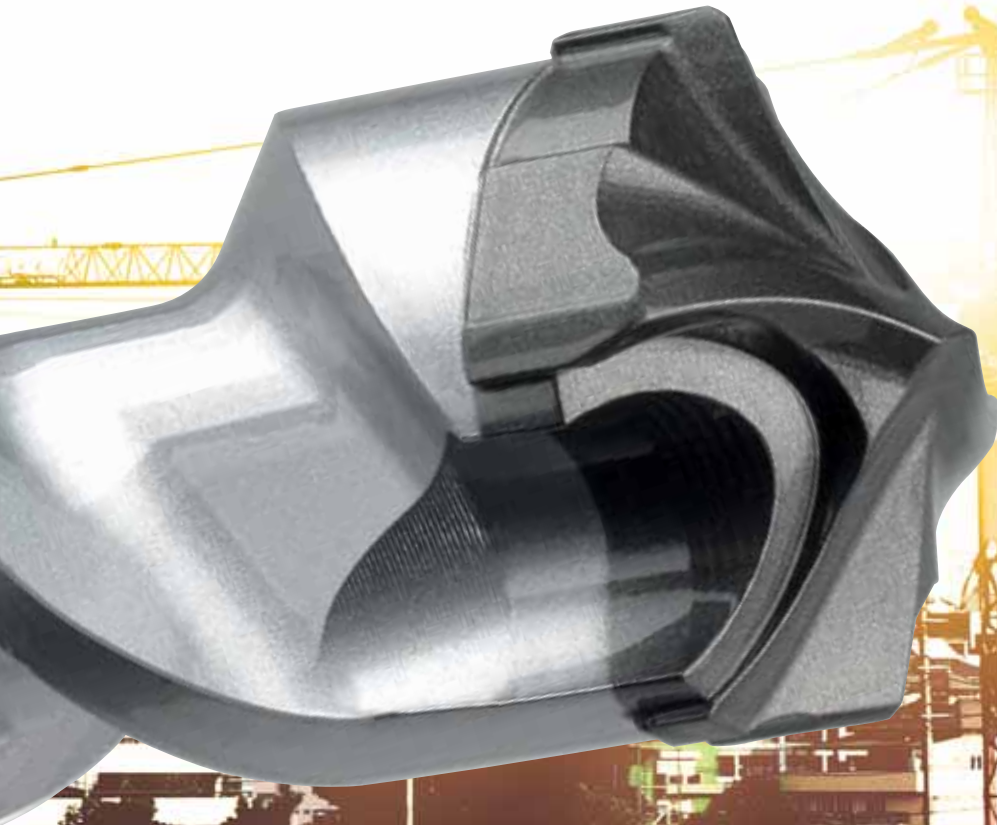
**DRILLS THROUGH
OVERSIZED REBAR***

+ 1000 HOLES*



* Hand tests with 20 joules hammer drill

* Tests on an automatic bench, 8,8 joules hammer drill, C50/60 concrete, 150 mm hole depth, 24 mm hole diameter



HIGH SPEED DRILLING*

**IDEAL FOR POWERFUL
HAMMER DRILL**

**30 CM
PER MINUTE**



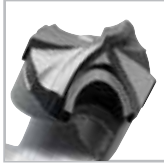
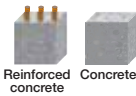
**20
JOULES
>12 KG**

*Tests on an automatic bench, C50/60 concrete, average on the 300 first holes

CONCRETE HAMMER DRILL BIT

Ref.

166



ULTIMAX 646

Hammer drill bit compatible SDS-max

Applications

- Drilling in reinforced concrete, concrete (wet or renovation), stone, masonry blocks, brick, lime, rebars connections in bridges, tunnels, mines blasting, pipes and cables, laying fence posts, particularly suitable for the work of plumbers and electricians.

Features

- MASSIVE HEAD SYSTEM 100% carbide head.
- 6 front cutters : 2 main ones 2 secondary ones 2 central ones.
- 4 side cutters.
- 6 side stabilisers.
- Eliptic 130° angle optimal combination of concave and convex cutters.
- Aggressive center point.
- Massive compact monobloc head .
- Copper brazing solder.
- Progressive flute.
- 2 very large clearance channels and large volume double screw propeller.
- Compatible SDS-max shank.

Benefits

- Ideal for reinforcements, extreme lifetime.
- Drills through oversized rebar.
- Unique drilling speed.
- Large capacity for evacuation of dust and rubble.
- Cutting capacity of the rebars increased thanks to the 6 front cutters : demolition effect.
- High resistance to heating, breaking and all use cases.
- Ideal on powerful perforator.
- Comfort of use, less vibration.
- High quality alloy steel, premium tungsten carbide and heat treatment in a controlled atmosphere optimize 100% recovery of hammer hammer strike.

see our
video on
YouTube





Clip noir

Ø	Ref.	JCPARTNO	Qt.
L 200 x 340			
12	166D12L0340	3336600004818	1
14	166D14L0340	3336600004825	1
15	166D15L0340	3336600004832	1
16	166D16L0340	3336600004849	1
18	166D18L0340	3336600004856	1
20	166D20L0340	3336600004870	1
22	166D22L0340	3336600004887	1
24	166D24L0340	3336600004894	1
25	166D25L0340	3336600004900	1
26	166D26L0340	3336600004917	1
28	166D28L0340	3336600068261	1
30	166D30L0340	3336600028760	1
32	166D32L0340	3336600068278	1
35	166D35L0340	3336600054707	1
36	166D36L0340	3336600063440	1
38	166D38L0340	3336600063457	1
40	166D40L0340	3336600063464	1
42	166D42L0340	3336600063402	1
45	166D45L0340	3336600063471	1
L 400 x 540			
12	166D12L0540	3336600004924	1
14	166D14L0540	3336600004931	1
15	166D15L0540	3336600004948	1
16	166D16L0540	3336600004955	1
18	166D18L0540	3336600005136	1
20	166D20L0540	3336600005150	1
22	166D22L0540	3336600005167	1
24	166D24L0540	3336600005174	1
25	166D25L0540	3336600005181	1
26	166D26L0540	3336600005198	1
28	166D28L0540	3336600005204	1
30	166D30L0540	3336600005228	1
32	166D32L0540	3336600005235	1
35	166D35L0540	3336600005242	1
36	166D36L0540	3336600005259	1
38	166D38L0540	3336600023093	1
40	166D40L0540	3336600023109	1
42	166D42L0540	3336600023116	1
45	166D45L0540	3336600063419	1
L 550 x 690			
16	166D16L0690	3336600005327	1
18	166D18L0690	3336600005334	1
20	166D20L0690	3336600005358	1
22	166D22L0690	3336600005365	1
24	166D24L0690	3336600005372	1
25	166D25L0690	3336600005389	1
26	166D26L0690	3336600005396	1
28	166D28L0690	3336600005402	1
30	166D30L0690	3336600005426	1
32	166D32L0690	3336600005433	1
35	166D35L0690	3336600005440	1
36	166D36L0690	3336600005457	1
38	166D38L0690	3336600028685	1
40	166D40L0690	3336600028692	1
42	166D42L0690	3336600063389	1
45	166D45L0690	3336600063396	1
L 780 x 920			
16	166D16L0920	3336600005464	1
18	166D18L0920	3336600005471	1
20	166D20L0920	3336600005495	1
22	166D22L0920	3336600005501	1
24	166D24L0920	3336600005518	1
25	166D25L0920	3336600005525	1
26	166D26L0920	3336600005532	1
28	166D28L0920	3336600005549	1
30	166D30L0920	3336600005563	1
32	166D32L0920	3336600005570	1
35	166D35L0920	3336600005587	1
36	166D36L0920	3336600005594	1
40	166D40L0920	3336600005600	1
42	166D42L0920	3336600021464	1
45	166D45L0920	3336600024113	1
L 1160 x 1300			
20	166D20L1300	3336600063297	1
22	166D22L1300	3336600063303	1
25	166D25L1300	3336600068193	1
28	166D28L1300	3336600063310	1
32	166D32L1300	3336600028746	1
35	166D35L1300	3336600063327	1
36	166D36L1300	3336600063334	1
42	166D42L1300	3336600063341	1
45	166D45L1300	3336600063358	1
L 1360 x 1500			
20	166D20L1500	3336600024120	1
24	166D24L1500	3336600024137	1
25	166D25L1500	3336600037625	1
28	166D28L1500	3336600024144	1
32	166D32L1500	3336600024151	1
36	166D36L1500	3336600024168	1
40	166D40L1500	3336600063365	1
42	166D42L1500	3336600063372	1
45	166D45L1500	3336600027091	1

*3 cutting edges



Power recommendation machine / drill diameter
Using a machine not adapted to the diameter can break the drill bit.

MACHINE Attachment	Joule strike force	Weight in kg	DIAMETER																			
			12	14	16	18	20	22	24	26	28	30	32	34	36	38	40	42	44	46	48	50
SDS-max wired perforator	8-9	6-7																				
	12-13	8-9																				
	19-20	11-12																				

Optimal Occasional Not compatible